

B5926
Butterick

1863-2013
150TH
ANNIVERSARY



BUTTERICK SIZE CHART

MEASUREMENTS IN INCHES

SIZE	4	6	8	10	12	14	16	18	20	22	24	26
Bust	29½	30½	31½	32½	34	36	38	40	42	44	46	48
Chest	27½	28½	29½	30½	32	34	36	38	40	42	44	46
Waist	22	23	24	25	26½	28	30	32	34	37	39	41½
Hip	31½	32½	33½	34½	36	38	40	42	44	46	48	50

MEASUREMENTS IN CENTIMETERS

SIZE	4	6	8	10	12	14	16	18	20	22	24	26
Bust	75	78	80	83	87	92	97	102	107	112	117	122
Chest	70	73	75	78	81	87	92	97	102	107	112	117
Waist	56	58	61	64	67	71	76	81	87	94	99	104
Hip	80	83	85	88	92	97	102	107	112	117	122	127

U.S. \$18.95 CAN. \$18.95 ● YELLOW **L**

B5926

EASY/FACILE

MISSES'/MISSES' PETITE JACKET: Fitted, unlined jacket has collar, pockets and stitched hems. **A, C:** Purchased trim.

Combinations: **B5**(8-10-12-14-16), **F5**(16-18-20-22-24)

SIZES	8	10	12	14	16	18	20	22	24
A 60**	1¾	2	2	2½	2½	2½	2½	2½	2¼
B 60**	1½	1½	1¾	1¾	1¾	2¾	2¾	2¾	2¾
FUSIBLE INTERFACING A, B									
18", 20"	¾	¾	1¼	1¼	1¼	1¾	1¾	1¾	1¾
C, D 60**	2¼	2¼	2¼	2¼	2¾	2¾	2¾	2¾	2¾
FUSIBLE INTERFACING C, D									
18", 20"	1¼	1¼	1¼	1¾	1¾	1¾	1½	1½	1½

Designed for moderate stretch knit fabrics.

FABRICS: Wool Jersey, Ponte Knit, Cotton Knit, Sweatshirt Fleece.

Unsuitable for obvious diagonals.

*With Nap.

NOTIONS: A, B, C, D: ¾" Buttons: Two for **A, B** and Three for **C, D**. **A:** ¾" Trim or Ribbon: 1½ yds. for Sizes 8 - 12 and 2 yds. for Sizes 14 - 24. **C:** ½" Double Fold Bias Tape: 6 yds. for Sizes 8 - 12 and 7 yds. for Sizes 14 - 24.

VESTE (J. FEMME/PETITE J. FEMME): Veste ajustée, non doublée, avec col, poches et ourlets piqués. **A, C:** Galon acheté.

Séries: **B5**(8-10-12-14-16), **F5**(16-18-20-22-24)

TAILLES	8	10	12	14	16	18	20	22	24
A 150cm*	1.60	1.90	1.90	2.00	2.00	2.00	2.00	2.00	2.10
B 150cm*	1.40	1.40	1.60	1.60	1.60	2.20	2.20	2.20	2.20
ENTOILAGE THERMOCOLLANT A, B									
46, 51cm	0.80	0.80	1.20	1.20	1.20	1.30	1.30	1.30	1.30
C, D 150cm*	2.10	2.10	2.10	2.10	2.20	2.20	2.40	2.40	2.40
ENTOILAGE THERMOCOLLANT C, D									
46, 51cm	1.20	1.20	1.20	1.30	1.30	1.30	1.40	1.40	1.40

Créé pour des tricot à élasticité moyenne.

TISSUS: Jersey de laine, Maille de ponte, Jersey de coton, Jersey molletonné pour sweatshirt.

Grandes diagonales ne conviennent pas.

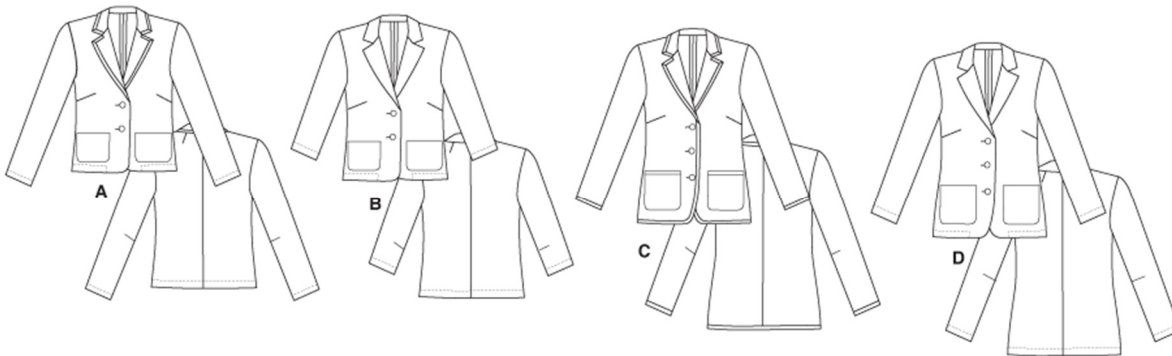
*Avec Sens.

MERCERIE: A, B, C, D: Boutons de 19mm: 2 pour **A, B** et 3 pour **C, D**. **A:** Galon ou Ruban de 1cm: 1.4m pour Tailles 8 - 12 et 1.9m pour Tailles 14 - 24. **C:** Biais double de 1.3cm: 5.5m pour Tailles 8 - 12 et 6.4m pour Tailles 14 - 24.

Finished Garment Measurements/Mesures du Vêtement Fini

Bust/Poitrine: **A, B, C, D:** 35½" - 50" (90cm - 127cm)

Note: Remaining measurements included on pattern tissue./N.B. Les mesures restantes sont imprimées sur la pièce de patron.



Stretch (Crosswise) 4" (10 cm) of Folded Knit From Here
Étirer 10cm de tricot plié sur la largeur, de cette limite

BUTTERICK PATTERN, 120 BROADWAY, NEW YORK 10271 © 2013 The McCall Pattern Co. ● www.butterick.com

● PRINTED IN U.S.A. ALL RIGHTS RESERVED. SOLD FOR INDIVIDUAL HOME USE ONLY AND NOT FOR COMMERCIAL OR MANUFACTURING PURPOSE RESERVE À UN USAGE PERSONNEL.

